



FOOTBALL 2020



[www.niketeamfootball.com](http://www.niketeamfootball.com)





WHATEVER YOUR GREATNESS

















# CONTENTS







|     |   |                        |
|-----|---|------------------------|
| 08  |    | <b>MATCHDAY</b>        |
| 40  |    | <b>REFEREE</b>         |
| 52  |    | <b>NIKE PRO</b>        |
| 56  |   | <b>FIRST LAYER</b>     |
| 58  |  | <b>TRAINING</b>        |
| 98  |  | <b>GENERICs</b>        |
| 100 |  | <b>LIFESTYLE</b>       |
| 106 |  | <b>EQUIPMENT</b>       |
| 118 |  | <b>SIZE &amp; CARE</b> |



# MATCHDAY LINE-UP



VAPOR II

10



STRIKE

12



NEW WOMEN'S STRIKE

14



NEW CHALLENGE III

16



STRIPED DIVISION III

18



NEW WOMEN'S STRIPED DIVISION III

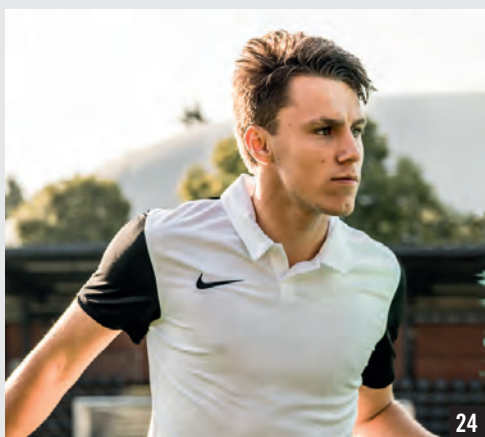
20



LEGEND

22





24

**NEW** TROPHY IV



26

**PARK DERBY II**



28

**TIEMPO PREMIER**



30

**NEW** PARK VII



32

**NEW** WOMEN'S PARK VII



34

**NEW** GARDIEN III



38

**NEW** PARK IV GK







# VAPOR II

## VAPOR KNIT II JERSEY



### PLAY FAST. PLAY LIGHT.

- Nike VaporKnit technology combines lightweight cooling, reduced cling and precision fit.
- Quick-drying, high-stretch yarn provides flexible comfort.
- Precision fit conforms to your body for a streamlined feel.
- Neckline is finished with minimal seams for a distraction-free feel.
- Raglan sleeves eliminate the shoulder seam to help you move freely.
- Textured Swoosh design trademark is heat transferred on the right chest.
- 100% recycled polyester.



Backview

010

100

463

657

- 010 Black/Anthracite/(White)  
 100 White/Pure Platinum/(Black)  
 463 Royal Blue/Obsidian/(White)  
 657 University Red/Bright Crimson/(White)

AQ2672 Short Sleeve

Men's: S M L XL 2XL

RRP € 60

## VAPOR KNIT II SHORT



### FEWER SEAMS, MORE SPEED.

- Nike VaporKnit technology combines lightweight cooling, reduced cling and precision fit.
- Flyvent Waistband provides lightweight ventilation for exceptional comfort.
- Durable water-repellent finish helps keep you dry.
- Hem vents help you move freely.
- Lack of side seam allows the shorts to move smoothly against the skin.
- Textured Swoosh design trademark is heat transferred on the left leg.
- 100% recycled polyester.



Backview

010

100

463

657

- 010 Black/Black/(White)  
 100 White/White/(Black)  
 463 Royal Blue/Royal Blue/(White)  
 657 University Red/University Red/(White)

AQ2685

Men's: S M L XL 2XL

RRP € 50

Life-cycle: 01 January 2019 - 31 December 2020







# STRIKE

## ENGINEERED FOR SPEED.



- Dri-FIT technology helps you stay dry, comfortable and focused.
- Stretchy engineered knit sleeves move with you.
- Hybrid v-neck is inspired by the on-pitch look of the pros.
- Raglan sleeves eliminate the shoulder seam to help you move freely.
- Slim fit follows your body's shape.
- 100% recycled polyester.

*Mesh back panel adds breathability*



Backview

010

011



101

463

657

### MEN'S

010 Black/Anthracite/(White)

011 Black/Vivid Pink/(White)

### YOUTH

010 Black/Vivid Pink/(White)

011 Black/Anthracite/(White)

### MEN'S & YOUTH

101 White/White/(Black)

463 Royal Blue/Obsidian/(White)

657 University Red/Bright Crimson/(White)

**AJ1018** Short Sleeve

Men's: S M L XL 2XL

**RRP € 35**

**AJ1027** Short Sleeve

Youth: XS S M L XL

**RRP € 30**

Life-cycle: 01 January 2019 - 31 December 2020

STRIKE







# NEW WOMEN'S STRIKE

## ENGINEERED FOR SPEED.



- Dri-FIT technology helps you stay dry, comfortable and focused.
- Stretchy engineered knit sleeves move with you.
- Mesh back panel adds breathability.
- Hybrid v-neck is inspired by the on-pitch look of the pros.
- Raglan sleeves eliminate the shoulder seam to help you move freely.
- 100% recycled polyester.



- 010 Black/Anthracite/(White)  
 011 Black/Vivid Pink/(White)  
 101 White/White/(Black)  
 463 Royal Blue/Obsidian/(White)  
 657 University Red/Bright Crimson/(White)

CN6886 Short Sleeve

Women's: XS S M L XL

RRP € 35

Life-cycle: 01 July 2019 - 31 December 2020







# NEW CHALLENGE III

## SWEAT-WICKING COMFORT.



- Dri-FIT technology helps keep you dry and comfortable.
- Slim fit for a tailored feel.
- Ribbed collar and cuffs deliver a retro look and feel.
- 100% polyester.



- 010 Black/Black/(White)  
 100 White/White/(Black)  
 302 Pine Green/Pine Green/(White)  
 463 Royal Blue/Royal Blue/(White)  
 657 University Red/University Red/(White)

### BV6703 Short Sleeve

Men's: S M L XL 2XL

RRP € 35

### BV6738 Short Sleeve

Youth: XS S M L XL

RRP € 30







# STRIPED DIVISION III

## ON-PITCH BREATHABILITY.



- Dri-FIT technology helps you stay dry and comfortable.
- V-neck collar is taped for a smooth feel against the skin.
- Mesh back panel provides additional breathability.
- Raglan sleeves eliminate the shoulder seam to allow a natural range of motion.
- Swoosh design trademark is embroidered on the right chest.
- 100% polyester.



- 010 Black/White/White/(Black)  
 060 Anthracite/Black/White/(White)  
 302 Pine Green/Black/White/(White)  
 412 University Blue/White/Black/(Black)  
 463 Royal Blue/Black/White/(White)  
 464 Royal Blue/White/Black/(Black)  
 657 University Red/Black/White/(White)  
 658 University Red/White/Black/(Black)  
 739 University Gold/Black/White/(White)  
 740 University Gold/Royal Blue/White/(White)

**894081** Short Sleeve  
 Men's: S M L XL 2XL **RRP € 30**

**894087** Long Sleeve  
 Men's: S M L XL 2XL **RRP € 35**

**894102** Short Sleeve  
 Youth: XS S M L XL **RRP € 25**

**894103** Long Sleeve  
 Youth: XS S M L XL **RRP € 30**







# NEW WOMEN'S STRIPED DIVISION III

## ON-PITCH BREATHABILITY.



- Dri-FIT technology helps you stay dry and comfortable.
- V-neck collar is taped for a smooth feel against the skin.
- Mesh back panel provides additional breathability.
- Raglan sleeves eliminate the shoulder seam to allow a natural range of motion.
- Swoosh design trademark is embroidered on the right chest.
- 100% recycled polyester.



Backview

010

060

414

463

657

719

010 Black/White/(Black)  
 060 Anthracite/Black/(White)  
 414 University Blue/University Blue/(Black)  
 463 Royal Blue/Black/(White)  
 657 University Red/White/(Black)  
 719 Tour Yellow/University Gold/(White)

CN6888 Short Sleeve

Women's: XS S M L XL

RRP € 30

WOMEN'S STRIPED DIVISION III







# LEGEND

## RETRO STYLE. FUTURE FAST.



- Dri-FIT technology helps you stay dry, comfortable and focused.
- Mesh underarm and shoulder insets add breathability.
- Swoosh design trademark is embroidered on the right chest.
- Hybrid V-neck collar has taped seams for a smooth feel.
- 100% recycled polyester.



Backview

010

100

101

102



302

410

411

463

657

739

- 010 Black/White/Black/(White)
- 100 White/Black/White/(Black)
- 101 White/University Red/University Red/(Black)
- 102 White/Royal Blue/Royal Blue/(Black)
- 302 Pine Green/Action Green/Action Green/(White)
- 410 Midnight Navy/White/White/(White)
- 411 Midnight Navy/Royal Blue/Royal Blue/(White)
- 463 Royal Blue/White/White/(White)
- 657 University Red/White/White/(White)
- 739 University Gold/Black/Black/(Black)

**AJ0998** Short Sleeve

Men's: S M L XL 2XL

**RRP € 25**

**AJ1010** Short Sleeve

Youth: XS S M L XL

**RRP € 20**







# NEW TROPHY IV

## SWEAT-WICKING COMFORT.

- Dri-FIT technology helps keep you dry and comfortable.
- Mesh side stripes and back panel add breathability.
- Slim fit for a tailored feel.
- 100% recycled polyester.



Front panel graphic is embossed for subtle style



Backview

010

052 / 053

100

302 / 303

354



410

412

463 / 483

657

719

819

### MEN'S

010 Black/White/(White)  
053 Pewter Grey/Bright Crimson/(Black)  
100 White/Black/(Black)  
303 Pine Green/Gorge Green/(White)  
354 Hyper Turq/Volt/(Black)  
410 Midnight Navy/Photo Blue/(White)  
412 University Blue/Midnight Navy/(White)  
463 Royal Blue/Midnight Navy/(White)  
657 University Red/Team Red/(White)  
719 Tour Yellow/University Gold/(Black)  
819 Safety Orange/Team Orange/(Black)

### YOUTH

010 Black/White/(White)  
052 Pewter Grey/Bright Crimson/(Black)  
100 White/Black/(Black)  
302 Pine Green/Gorge Green/(White)  
354 Hyper Turq/Volt/(Black)  
410 Midnight Navy/Photo Blue/(White)  
412 University Blue/Midnight Navy/(White)  
483 Royal Blue/Midnight Navy/(White)  
657 University Red/Team Red/(White)  
719 Tour Yellow/University Gold/(Black)  
819 Safety Orange/Team Orange/(Black)

### BV6725 Short Sleeve

Men's: S M L XL 2XL

RRP € 25

### BV6749 Short Sleeve

Youth: XS S M L XL

RRP € 20

Life-cycle: 01 January 2020 - 31 December 2022







# PARK DERBY II

## COMFORT FOR COMPETITION.



- Nike Dry fabric helps you stay dry and comfortable.
- V-neck collar is taped for a smooth feel against the skin.
- Set-in short sleeves provide a classic, comfortable fit.
- Contrast-colored shoulder panels provide an iconic Nike Football look.
- Swoosh design trademark is embroidered on the right chest.
- 100% polyester.



Backview

010

100

302



410

463

547

677

739

- 010 Black/Volt/Volt/(White)
- 100 White/Jersey Gold/Jersey Gold/(Black)
- 302 Pine Green/University Gold/University Gold/(White)
- 410 Midnight Navy/University Gold/University Gold/(White)
- 463 Royal Blue/University Red/University Red/(White)
- 547 Court Purple/White/White/(White)
- 677 Team Red/University Blue/University Blue/(White)
- 739 University Gold/University Red/University Red/(Black)

### 894312 Short Sleeve

Men's: S M L XL 2XL

RRP € 23

### 894322 Long Sleeve

Men's: S M L XL 2XL

RRP € 28

### 894116 Short Sleeve

Youth: XS S M L XL

RRP € 18

### 894117 Long Sleeve

Youth: XS S M L XL

RRP € 23

Life-cycle: 01 January 2018 - 31 December 2020







# TIEMPO PREMIER

## PERFORM IN COOL COMFORT.



- Dri-FIT technology helps you stay dry and comfortable.
- Mesh back panel provides additional breathability.
- Ribbed V-neck collar provides a versatile fit.
- Raglan sleeves eliminate the shoulder seam to allow a natural range of motion.
- Contrast-colored side stripes provide an iconic Nike Football look.
- 100% polyester.



*Front panel graphic is embossed for subtle style*



Backview

010

057

100

302

410

411



412

464

657

662

739

815

- 010 Black/Black/White/(White)
- 057 Pewter Grey/Pewter Grey/Black/(Black)
- 100 White/White/Black/(Black)
- 302 Pine Green/Pine Green/White/(White)
- 410 Midnight Navy/Midnight Navy/University Red/(White)
- 411 Midnight Navy/Midnight Navy/White/(White)
- 412 University Blue/University Blue/White/(White)
- 464 Royal Blue/Royal Blue/University Gold/(White)
- 657 University Red/University Red/White/(White)
- 662 Vivid Pink/Vivid Pink/Black/(Black)
- 739 University Gold/University Gold/Black/(Black)
- 815 Safety Orange/Safety Orange/Black/(Black)

### 894230 Short Sleeve

Men's: S M L XL 2XL

RRP € 23

### 894248 Long Sleeve

Men's: S M L XL 2XL

RRP € 28

### 894111 Short Sleeve

Youth: XS S M L XL

RRP € 18

### 894113 Long Sleeve

Youth: XS S M L XL

RRP € 23

Life-cycle: 01 January 2018 - 31 December 2021







# NEW PARK VII

## COMFORT FOR COMPETITION.



- Dri-FIT technology helps keep you dry and comfortable.
- Mesh back panel adds breathability.
- Slim fit for a tailored feel.
- 100% recycled polyester.



Backview

010

100

302

354

410

412

463



547

635

657

677

702

719

729

819

010 Black/(White)

100 White/(Black)

302 Pine Green/(White)

354 Hyper Turq/(Black) \*

410 Midnight Navy/(White)

412 University Blue/(White)

463 Royal Blue/(White)

547 Court Purple/(White) \*

635 Bright Crimson/(Black) \*

657 University Red/(White)

677 Team Red/(White)

702 Volt/(Black)

719 Tour Yellow/(Black)

729 Jersey Gold/(Black) \*

819 Safety Orange/(Black)

\* Not available in Long Sleeve

**BV6708** Short Sleeve

Men's: S M L XL 2XL

**RRP € 20**

**BV6706** Long Sleeve

Men's: S M L XL 2XL

**RRP € 25**

**BV6741** Short Sleeve

Youth: XS S M L XL

**RRP € 18**

**BV6740** Long Sleeve

Youth: XS S M L XL

**RRP € 22**

Life-cycle: 01 January 2020 - 31 December 2023







# NEW WOMEN'S PARK VII

## PARK VII JERSEY



### COMFORT FOR COMPETITION.

- Dri-FIT technology helps keep you dry and comfortable.
- Mesh on the back adds breathability.
- Slim fit for a tailored feel.
- 100% recycled polyester.



|                           |                             |
|---------------------------|-----------------------------|
| 010 Black/(White)         | 412 University Blue/(White) |
| 100 White/(Black)         | 463 Royal Blue/(White)      |
| 341 Pine Green/(White)    | 547 Court Purple/(White)    |
| 354 Hyper Turq/(Black)    | 657 University Red/(White)  |
| 410 Midnight Navy/(White) | 719 Tour Yellow/(Black)     |

**BV6728** Short Sleeve

Women's: XS S M L XL

RRP € 20

## PARK III KNIT SHORT



### STAY DRY AND COMFORTABLE.

- Dri-FIT technology helps you stay dry, comfortable and focused.
- Stretchy waistband is lined with mesh for breathability.
- Slim fit for a tailored feel.
- 100% recycled polyester.



|                             |                            |
|-----------------------------|----------------------------|
| 010 Black/(White)           | 463 Royal Blue/(White)     |
| 100 White/(Black)           | 657 University Red/(White) |
| 410 Midnight Navy/(White)   | 677 Team Red/(White)       |
| 412 University Blue/(White) | 719 Tour Yellow/(Black)    |

**BV6860**

Women's: XS S M L XL

RRP € 18







# NEW GARDIEN III

## GARDIEN JERSEY

- Dri-FIT technology helps keep you dry, comfortable and focused.
- Flexible fabric on the sleeves give you the freedom to make every save.
- Slim fit for a tailored feel.
- 100% recycled polyester.



## LEAGUE KNIT II SHORT

- Dri-FIT technology helps you stay dry, comfortable and focused.
- Mesh stripes on the lower legs add breathability.
- Slim fit for a tailored feel.



## MATCHFIT SOCKS



### BV6714 Short Sleeve

Men's: S M L XL 2XL

RRP € 60

### BV6711 Long Sleeve

Men's: S M L XL 2XL

RRP € 65

### BV6743 Long Sleeve

Youth: XS S M L XL

RRP € 60

#### SHORT SLEEVE

398 Green Strike/Light Green Spark/(Green Spark)

477 Team Royal/Blue Spark/(Team Royal)

803 Total Orange/Brilliant Orange/(Team Orange)

#### LONG SLEEVE

398 Green Spark/Light Green Spark/(Green Spark)

406 Team Royal/Blue Spark/(Team Royal)

803 Team Orange/Brilliant Orange/(Team Orange)

#### YOUTH

398 Green Strike/Light Green Spark/(Green Spark)

477 Team Royal/Blue Spark/(Team Royal)

891 Team Orange/Brilliant Orange/(Team Orange)

- Elastic waistband and drawcord.
- 100% recycled polyester.

### BV6852

Men's: S M L XL 2XL

RRP € 20

### BV6863

Youth: XS S M L XL

RRP € 18

329 Green Spark/Black/(Black)

477 Team Royal/White/(White)

891 Team Orange/Black/(Black)

- Dri-FIT technology helps keep feet dry and comfortable
- Cushioning in high-wear areas adds durability and helps absorb impact.
- Dynamic arch provides a supportive fit and feel.
- 92% polyester, 5% cotton, 3% spandex.

### CV1956 Unisex

RRP € 15

XS: Eur 30-34 | S: Eur 34-38 | M: Eur 38-42 | L: Eur 42-46 | XL: Eur 46-50  
XS: UK 12-2 | S: UK 2-5 | M: UK 5.5-7.5 | L: UK 8-11 | XL: UK 11-14.5

This product must be ordered in multiples of 6 pairs.

329 Green Spark/(Black)

477 Team Royal/(White)

891 Team Orange/(Black)

Life-cycle: 01 April 2020 - 31 December 2021





## PADDED GOALKEEPER TIGHT



### SWEAT-WICKING COMFORT WITH PADDING.

- Articulated padding on the hips provides flexible impact absorption.
- Dri-FIT technology helps keep you dry, comfortable and focused.
- 80% polyester, 20% spandex.



Backview

010

010 Black/Black/(White)

**CV0045**

Men's: S M L XL 2XL

RRP € 60

**CV0050**

Youth: XS S M L XL

RRP € 50



## PADDED GOALKEEPER SHORT



### SWEAT-WICKING COMFORT WITH PADDING.

- Articulated padding on the hips provides flexible impact absorption.
- Dri-FIT technology helps keep you dry, comfortable and focused.
- 80% polyester, 20% spandex.



Backview

010

010 Black/Black/(White)

**CV0053**

Men's: S M L XL 2XL

RRP € 50

**CV0057**

Youth: XS S M L XL

RRP € 40











# NEW PARK IV GK

**STAY DRY WHILE YOU PROTECT YOUR GOAL.**



- Mesh across the back helps keep you cool when the game heats up.
- Dri-FIT technology helps keep you dry, comfortable and focused.
- Slim fit for a tailored feel.
- 100% recycled polyester.



Backview

010

052



463

702

819

010 Black/White/(White)  
052 Pewter Grey/White/(Black)  
463 Royal Blue/White/(White)  
702 Volt/White/(Black)  
819 Safety Orange/White/(Black)

**CJ6066** Long Sleeve

Men's: S M L XL 2XL

**RRP € 35**

**CJ6072** Short Sleeve

Youth: XS S M L XL

**RRP € 30**

Life-cycle: 01 January 2020 - 31 December 2023



# REFEREE





2 large chest pockets  
secure storage with  
interior strap closure

# REFEREE

## NIKE DRY REFEREE TOP



### READY FOR THE PITCH.

- Nike Dry fabric moves sweat from your skin for quicker evaporation, helping you stay dry, comfortable and focused.
- Raglan sleeves eliminate shoulder seams to let your arms move naturally.

- Color-tipping along the collar adds a subtle contrast.
- 100% polyester.

010 Black/Anthracite/(Anthracite)  
060 Anthracite/Dark Grey/(Dark Grey)  
354 Hyper Turq/Green Glow/(Hyper Turq)  
551 Vivid Purple/Bright Violet/(Vivid Purple)  
703 Volt/Electric Green/(Volt)  
819 Safety Orange/Total Orange/(Safety Orange)



Backview

010

060

354

551

703

819

**AA0735** Short Sleeve

Men's: XS S M L XL 2XL **RRP € 50**

**AA0736** Long Sleeve

Men's: XS S M L XL 2XL **RRP € 55**

Life-cycle: 01 June 2018 - 31 March 2022

## NIKE DRY REFEREE SHORT



### SECURE YOUR FIT. PREPARE FOR ACTION.

- Nike Dry fabric helps you stay dry, comfortable and focused.
- Hem hits above the knee for excellent range of motion.

- Mesh lining inside the waistband brings breathable comfort.
- Back pocket has a hook-and-loop closure for security.
- Drawcord provides a low-profile custom fit.
- 100% polyester.

010 Black/Black/(Anthracite)

**AA0737**

Men's: XS S M L XL 2XL **RRP € 35**

Life-cycle: 01 January 2018 - 31 March 2022

3 pockets store  
essential items  
during the match



Backview

010

## CLASSIC SOCK



### CLASSIC DESIGN, COMFORTABLE PERFORMANCE.

- Dri-FIT technology helps keep feet dry and comfortable.
- Cushioning in high-wear areas helps absorb impact.
- Dynamic arch provides a supportive fit and feel.

- Anatomical left and right socks are designed for a natural fit.
- 97% nylon, 3% spandex.

017 Black/(Anthracite)

**SX5728** Unisex

**RRP € 10**

XS: Eur 30-34 | S: Eur 34-38 | M: Eur 38-42 | L: Eur 42-46 | XL: Eur 46-50  
XS: UK 12-2 | S: UK 2-5 | M: UK 5.5-7.5 | L: UK 8-11 | XL: UK 11-14.5

Life-cycle: 01 January 2017 - 31 December 2020

This product must be ordered in multiples of 6 pairs.



017







# NEW PARK LITTLE KIDS SET

## PLAY IN COMFORT.

- Dri-FIT technology helps keep you dry and comfortable.
- Mesh on the back of the jersey creates ventilation.
- Stretchy waistband on the shorts is lined with mesh for breathability.
- Standard fit for a relaxed, easy feel.
- 100% recycled polyester.



*Standard fit for  
relaxed, easy feel*



- 010 Black/Black/(White)
- 100 White/White/(Black)
- 302 Pine Green/Pine Green/(White)
- 410 Midnight Navy/Midnight Navy/(White)
- 463 Royal Blue/Royal Blue/(White)
- 657 University Red/University Red/(White)

CD2244

Little Kids': XS S M L XL

RRP € 40

Life-cycle: 01 January 2020 - 31 December 2023



# VENOM II WOVEN SHORT

Without brief

## BOLD BREATHABILITY.



- Dri-FIT technology helps you stay dry and comfortable.
- Drawcord provides a low-profile custom fit.
- All-over embossed graphic provides subtle style.
- Waistband is lined with contrast-colored mesh.
- Iconic Nike Football side stripes are made of breathable mesh fabric.
- 100% polyester.



- 010 Black/White/White/(White)  
 100 White/White/Black/(Black)  
 302 Pine Green/White/White/(White)  
 463 Royal Blue/White/White/(White)  
 547 Court Purple/White/White/(White)  
 657 University Red/White/Black/(White)

894331

Men's: S M L XL 2XL

RRP € 30

894128

Youth: XS S M L XL

RRP € 25



# LASER IV WOVEN SHORT

Without brief

## STRETCH YOUR LIMITS.



- Dri-FIT technology helps you stay dry, comfortable and focused.
- 4-way stretch fabric moves with you on the pitch.
- Elastic waistband with flat drawcord provides a personalized fit.
- Hem vents help you move freely.
- Swoosh design trademark is embroidered on the left leg.
- 100% polyester.

*Mesh side  
stripes add  
breathability*



- 010 Black/Black/(White)
- 100 White/White/(Black)
- 302 Pine Green/Pine Green/(White)
- 410 Midnight Navy/Midnight Navy/(White)
- 412 University Blue/University Blue/(White)
- 463 Royal Blue/Royal Blue/(White)
- 657 University Red/University Red/(White)

### AJ1245

Men's: S M L XL 2XL

RRP € 25

### AJ1261

Youth: XS S M L XL

RRP € 20

SHORTS



# NEW LEAGUE KNIT II SHORT

Without brief



## BREATHABLE COMFORT FOR GAME DAY.

- Dri-FIT technology helps you stay dry, comfortable and focused.
- Mesh stripes on the lower legs add breathability.
- Slim fit for a tailored feel.
- Elastic waistband and drawcord.
- 100% recycled polyester.



Backview

010

100

302



410

463

657

- 010 Black/White/(White)
- 100 White/Black/(Black)
- 302 Pine Green/White/(White)
- 410 Midnight Navy/White/(White)
- 463 Royal Blue/White/(White)
- 657 University Red/White/(White)

**BV6852**

Men's: S M L XL 2XL

RRP € 20

**BV6863**

Youth: XS S M L XL

RRP € 18



# NEW PARK III SHORT

Without brief

**STAY DRY AND COMFORTABLE.**



- Dri-FIT technology helps you stay dry, comfortable and focused.
- Stretchy waistband is lined with mesh for breathability.
- Slim fit for a tailored feel.
- 100% recycled polyester.



SHORTS

010 Black/(White)  
017 Pewter Grey/(Black)  
100 White/(Black)  
302 Pine Green/(White)  
354 Hyper Turq/(Black)  
410 Midnight Navy/(White)  
412 University Blue/(White)  
463 Royal Blue/(White)

635 Bright Crimson/(Black)  
657 University Red/(White)  
677 Team Red/(White)  
702 Volt/(Black)  
719 Tour Yellow/(Black)  
739 University Gold/(Black)  
819 Safety Orange/(Black)

**BV6855**

Men's: S M L XL 2XL

RRP € 18

**BV6865**

Youth: XS S M L XL

RRP € 16

Life-cycle: 01 January 2020 - 31 December 2023



# NEW MATCHFIT SOCK

## DYNAMIC SUPPORT ON THE PITCH.



- Dri-FIT technology helps keep feet dry and comfortable.
- Cushioning in high-wear areas adds durability and helps absorb impact.
- Dynamic arch provides a supportive fit and feel.
- Anatomically correct left/right design for a natural fit.
- 92% polyester, 5% cotton, 3% spandex.



010

100

302

354



412

463

635

657

719

[www.niketeamfootball.com](http://www.niketeamfootball.com)

010 Black/(White)  
100 White/(Black)  
302 Pine Green/(White)  
354 Hyper Turq/(Black)  
412 University Blue/(Midnight Navy)

463 Royal Blue/(White)  
635 Bright Crimson/(Black)  
657 University Red/(White)  
719 Tour Yellow/(Black)

CV1956 Unisex

RRP € 15

XS: Eur 30-34 | S: Eur 34-38 | M: Eur 38-42 | L: Eur 42-46 | XL: Eur 46-50  
XS: UK 12-2 | S: UK 2-5 | M: UK 5.5-7.5 | L: UK 8-11 | XL: UK 11-14.5

This product must be ordered in multiples of 6 pairs.



# CLASSIC II SOCK

## CLASSIC DESIGN, COMFORTABLE PERFORMANCE.



- Dri-FIT technology helps keep feet dry and comfortable.
- Cushioning in high-wear areas helps absorb impact.
- Dynamic arch provides a supportive fit and feel.
- Anatomical left and right socks are designed for a natural fit.
- 97% nylon, 3% spandex.



010



057



100



101



302



411



412



463



545



648



670



702



719



739



816

010 Black/(White)  
057 Pewter Grey/(Black)  
100 White/(Black)  
101 White/(Royal Blue)  
302 Pine Green/(White)  
411 Midnight Navy/(White)  
412 University Blue/(White)  
463 Royal Blue/(White)

545 Court Purple/(White)  
648 University Red/(White)  
670 Team Red/(White)  
702 Volt/(Black)  
719 Tour Yellow/(Black)  
739 University Gold/(Black)  
816 Safety Orange/(Black)

**SX5728 Unisex**

**RRP € 10**

XS: Eur 30-34 | S: Eur 34-38 | M: Eur 38-42 | L: Eur 42-46 | XL: Eur 46-50  
XS: UK 12-2 | S: UK 2-5 | M: UK 5.5-7.5 | L: UK 8-11 | XL: UK 11-14.5

This product must be ordered in multiples of 6 pairs.



# STIRRUP SOCK

## BREATHABLE DESIGN

- Stirrup loop at the bottom.
- 88% nylon, 9% polyester, 3% spandex.



Size S covers  
S/M

---

Size L covers  
L/XL



- 010 Black/(White)  
 100 White/(Black)  
 410 Midnight Navy/(White)  
 463 Royal Blue/(White)  
 657 University Red/(White)

**SX5731 Unisex**

**RRP € 7**

S: Eur 34-42 (sizes S-M) | L: Eur 42-50 (sizes L-XL)  
 S: UK 2-7.5 (sizes S-M) | L: UK 8-14.5 (sizes L-XL)

This product must be ordered in multiples of 6 pairs.



# NEW LEG SLEEVES

## SQUAD LEG SLEEVE



### SECURE FIT FOR THE PITCH.

- Sweat-wicking design helps your feet stay dry and comfortable.
- Secure fit helps keep your shin guards in place.
- Mesh fabric adds ventilation.
- 95% polyester, 5% spandex.



010



100



410



463



657

- 010 Black/(White)
- 100 White/(Black)
- 410 Midnight Navy/(White)
- 463 Royal Blue/(White)
- 657 University Red/(White)

SK0033 Unisex

RRP € 10

S / M: Eur 34-42  
S / M: UK 2-7.5

L / XL: Eur 42-50  
L / XL: UK 8-14.5

This product must be ordered in multiples of 6 pairs.



# 

## **COMPRESSION CREW LONG SLEEVE TOP**



### **A TIGHT FIT THAT DRIES QUICK.**

- Dri-FIT technology helps keep you dry, comfortable and focused.
- Neck tape with a repeating “NIKE” adds durability.
- Split hem toward the front.
- Tight fit for a body-hugging feel.
- 91% polyester, 9% spandex.



- 010** Black/(White)  
**068** Smoke Grey/Light Smoke Grey/(Black)  
**100** White/(Black)  
**480** Game Royal/(Black)

**BV5588**

Men's: S M L XL 2XL

**RRP € 35**





## COMPRESSION MOCK LONG SLEEVE TOP



### A TIGHT FIT THAT DRIES QUICK.

- Dri-FIT technology helps keep you dry, comfortable and focused.
- Neck tape with a repeating "NIKE" for added durability.
- Tight fit for a body-hugging feel.
- Split hem toward the front.
- "NIKE PRO" on front right hem.
- 91% polyester, 9% spandex.



NIKE PRO

010 Black/White/(White)

BV5592

Men's: S M L XL 2XL

RRP € 35





## COOL COMPRESSION 6" SHORT



### A SMOOTH, TIGHT FIT THAT DRIES QUICK.

- Dri-FIT technology helps keep you dry, comfortable and focused.
- Flat, smooth seams and a body-sculpting, compressive fit provide a confident, distraction-free fit, making them ideal as a base layer.
- Updated with slightly higher waistband that is vented for breathability and thicker for enhanced support.
- Tight fit for a body-hugging feel.
- "NIKE PRO" branding on waistband.
- 90% polyester, 10% spandex.



Backview

010

085

100

010 Black/(White)  
085 Smoke Grey/Light Smoke Grey/(Black)  
100 White/(Black)

**BV5635**

Men's: S M L XL 2XL

**RRP € 25**



# NEW BRAS

## ALPHA BRA

### NATURAL SHAPE. NO SMOOSH.

- Cups help keep your natural shape.
- Perforations for breathability where you need it.
- Dri-FIT technology helps keep you dry and comfortable.



- Adjustable back clasp for easy on and off.
- Modified racerback design lets you move freely.
- 79% nylon, 21% spandex.



Backview

AJ0340

RRP € 45

S: Eur 34-42 (sizes S-M)  
S: UK 2-7.5 (sizes S-M)

L: Eur 42-50 (sizes L-XL)  
L: UK 8-14.5 (sizes L-XL)

010 Black/(White)

## VICTORY BRA

### GO-TO BRA FOR MEDIUM SUPPORT.

- Compression design offers a supported feel during medium-impact sports.
- Racerback design lets you move freely.



- Tight fit for a body-hugging feel.
- Elastic underbust band.
- 82% recycled polyester, 18% spandex.



Backview

010

100

010 Black/Black/(White)  
100 White/Black/(Black)

BV3900

RRP € 25

S / M: Eur 34-42  
S / M: UK 2-7.5

L / XL: Eur 42-50  
L / XL: UK 8-14.5



# FIRST LAYER



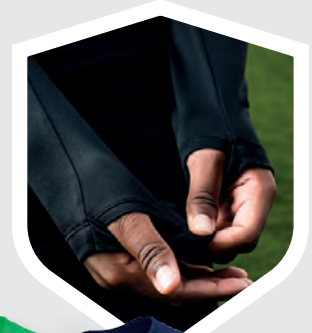


# PARK FIRST LAYER

## FIRST LAYER. FAST LAYER.



- Dri-FIT technology helps you stay dry, comfortable and focused.
- Stretchy fabric with a smooth face provides a low-friction underlayer.
- Tight fit gives a streamlined look and feel.
- Raglan sleeves eliminate the shoulder seam to help you move freely.
- Swoosh design trademark is heat transferred on the center of the chest.
- 100% polyester.



PARK FIRST LAYER

010 Black/(White)  
057 Pewter Grey/(White)  
100 White/(Cool Grey)  
302 Pine Green/(White)  
329 Green Spark/(Black) \*  
410 Midnight Navy/(White)  
412 University Blue/(White)  
463 Royal Blue/(White)  
547 Court Purple/(White)

635 Bright Crimson/(Black) \*\*  
657 University Red/(White)  
702 Volt/(Black)  
719 Tour Yellow/(Black)  
819 Safety Orange/(White)

\* Not available for Men's  
\*\* Not available for Youth

AV2609

Men's: S M L XL 2XL

RRP € 25

AV2611

Youth: XS S M L XL

RRP € 20

*Invisible thumb loops  
stay hidden when  
not in use*

Life-cycle: 01 January 2019 - 31 December 2023





# ACADEMY PRO











## TRAINING TOP

### BREATHABLE, SWEAT-WICKING COMFORT.

- Dri-FIT technology helps you stay dry, comfortable and focused.
- Ribbed fabric is soft and slightly textured for a premium feel.
- Standard fit for a relaxed, easy feel.
- 100% recycled polyester.



*Mesh chest stripe  
and back panel provides  
added breathability*



Backview

MEN'S  
YOUTH

073  
069

074  
068

075  
062

079  
064

#### MEN'S

073 Anthracite/Black/Black/(White)

074 Anthracite/Green Strike/Green Strike/(White)

075 Anthracite/Photo Blue/Photo Blue/(White)

079 Anthracite/Bright Crimson/Bright Crimson/(White)

#### YOUTH

062 Anthracite/Photo Blue/Photo Blue/(White)

064 Anthracite/Bright Crimson/Bright Crimson/(White)

068 Anthracite/Green Strike/Green Strike/(White)

069 Anthracite/Black/Black/(White)

#### BV6926

Men's: S M L XL 2XL RRP € 25

#### BV6947

Youth: XS S M L XL RRP € 20



## POLO

### TRAIN IN COMFORT.

- Dri-FIT technology helps keep you dry and comfortable.
- Ribbed fabric is soft and slightly textured for a premium feel.
- Fold-over ribbed collar delivers a timeless, professional look.
- 100% recycled polyester.



Backview

MEN'S  
YOUTH

062  
062

060  
060

068  
067

069  
069

#### MEN'S

062 Anthracite/Black/(White)

060 Anthracite/Green Strike/(White)

068 Anthracite/Photo Blue/(White)

069 Anthracite/Bright Crimson/(White)

#### YOUTH

062 Anthracite/Black/(White)

060 Anthracite/Green Strike/(White)

067 Anthracite/Photo Blue/(White)

069 Anthracite/Bright Crimson/(White)

#### BV6922

Men's: S M L XL 2XL RRP € 40

#### BV6949

Youth: XS S M L XL RRP € 35





## DRILL TOP



### WARMTH FOR THE FIELD.

- Dri-FIT technology helps you stay dry, comfortable and focused.
- Stretchy, lightweight fabric fits close to your arms.
- Invisible thumb loops hold your sleeves in place or remain concealed when not in use.
- Fabric with a lightly textured interior helps keep your core warm.
- The 1/4-length zipper lets you adjust your ventilation.
- 100% polyester.



Backview

010

398

406

635

#### MEN'S

- 010 Black/Anthracite/Black/(White)  
 398 Green Strike/Anthracite/Green Strike/(White)  
 406 Photo Blue/Anthracite/Photo Blue/(White)  
 635 Bright Crimson/Anthracite/Bright Crimson/(White)

#### BV6916

Men's: S M L XL 2XL RRP € 45

#### BV6942

Youth: XS S M L XL RRP € 40

#### YOUTH

- 010 Black/Anthracite/Black/(White)  
 398 Green Strike/Anthracite/Green Strike/(White)  
 406 Photo Blue/Anthracite/Photo Blue/(White)  
 635 Bright Crimson/Anthracite/Bright Crimson/(White)



## KNIT JACKET



### STAY DRY. STAY COMFORTABLE.

- Dri-FIT technology helps you stay dry, comfortable and focused.
- Zippered side pockets securely store small items.
- Standard fit for a relaxed, easy feel.
- Full-length zipper.
- 100% polyester.



Backview

MEN'S  
YOUTH

069  
061

060  
064

067  
069

068  
068

#### MEN'S

- 069 Anthracite/Black/(White)  
 060 Anthracite/Green Strike/(White)  
 067 Anthracite/Photo Blue/(White)  
 068 Anthracite/Bright Crimson/(White)

#### YOUTH

- 061 Anthracite/Black/(White)  
 064 Anthracite/Green Strike/(White)  
 069 Anthracite/Photo Blue/(White)  
 068 Anthracite/Bright Crimson/(White)

#### BV6918

Men's: S M L XL 2XL RRP € 50

#### BV6948

Youth: XS S M L XL RRP € 45





## KNIT SHORT

www.niketeamfootball.com



### STAY COOL AND DRY.

- Dri-FIT technology helps you stay dry, comfortable and focused.
- Mesh side stripes add ventilation.
- Standard fit for a relaxed, easy feel.
- Side pockets.
- 100% recycled polyester.



Backview

MEN'S  
YOUTH

061  
067

064  
068

067  
062

069  
066

#### MEN'S

- 061** Anthracite/Black/(White)  
**064** Anthracite/Green Strike/(White)  
**067** Anthracite/Bright Crimson/(White)  
**069** Anthracite/Photo Blue/(White)

#### YOUTH

- 067** Anthracite/Black/(White)  
**068** Anthracite/Green Strike/(White)  
**062** Anthracite/Bright Crimson/(White)  
**066** Anthracite/Photo Blue/(White)

#### BV6924

Men's: S M L XL 2XL

RRP € 25

#### BV6946

Youth: XS S M L XL

RRP € 20



## KNIT PANT



### STRETCHY, SWEAT-WICKING COMFORT.

- Dri-FIT technology helps you stay dry, comfortable and focused.
- Zippered side pockets store your essentials.
- Standard fit for a relaxed, easy feel.
- 100% recycled polyester.



Backview

MEN'S  
YOUTH

061  
064

064  
066

067  
069

070  
067

#### MEN'S

- 061** Anthracite/Black/(White)  
**064** Anthracite/Green Strike/(White)  
**067** Anthracite/Photo Blue/(White)  
**070** Anthracite/Bright Crimson/(White)

#### YOUTH

- 064** Anthracite/Black/(White)  
**066** Anthracite/Green Strike/(White)  
**069** Anthracite/Photo Blue/(White)  
**067** Anthracite/Bright Crimson/(White)

#### BV6920

Men's: S M L XL 2XL

RRP € 45

#### BV6944

Youth: XS S M L XL

RRP € 40





ACADEMY PRO



NEW

# WOMEN'S ACADEMY PRO











## TRAINING TOP



### BREATHABLE, SWEAT-WICKING COMFORT.

- Dri-FIT technology helps you stay dry, comfortable and focused.
- Ribbed fabric is soft and slightly textured for a premium feel.
- Mesh chest stripe and back panel provides added breathability.
- Standard fit for a relaxed, easy feel.
- 100% recycled polyester.



Backview

010

062

066

068

010 Anthracite/Black/Black/(White)

062 Anthracite/Green Strike/Green Strike/(White)

066 Anthracite/Bright Crimson/Bright Crimson/(White)

068 Anthracite/Photo Blue/Photo Blue/(White)

**BV6940**

Women's: XS S M L XL

**RRP € 25**



## DRILL TOP



### BREATHABLE WARMTH FOR THE FIELD.

- Dri-FIT technology helps you stay dry, comfortable and focused.
- Stretchy, unbrushed fabric fits close to your arms and invisible thumb loops help hold your sleeves in place.
- The curved hem creates a comfortable, flattering fit made for speed.
- Body fabric has a lightly brushed interior to help keep your core warm.
- The 1/4-length zipper lets you adjust your ventilation.
- 100% recycled polyester.



Backview

011

398

406

635

011 Black/Anthracite/Black/(White)

398 Green Strike/Anthracite/Green Strike/(White)

406 Photo Blue/Anthracite/Photo Blue/(White)

635 Bright Crimson/Anthracite/Bright Crimson/(White)

**BV6930**

Women's: XS S M L XL

**RRP € 45**





## KNIT JACKET



### STAY DRY. STAY COMFORTABLE.

- Dri-FIT technology helps you stay dry, comfortable and focused.
- Mesh panels across the chest provide added breathability.
- Standard fit for a relaxed, easy feel.
- 100% polyester.

*Zippered side pockets securely store small items*



Backview

010

060



061

068

- 010 Anthracite/Black/(White)  
060 Anthracite/Photo Blue/(White)  
061 Anthracite/Green Strike/(White)  
068 Anthracite/Bright Crimson/(White)

**BV6932**

Women's: XS S M L XL

**RRP € 50**









## KNIT SHORT



### STAY DRY ON THE FIELD.

- Dri-FIT technology helps keep you dry and comfortable.
- Elastic waistband with drawcord feels snug and comfortable.
- Standard fit for a relaxed, easy feel
- Side pockets.
- 100% recycled polyester.



- 010 Anthracite/Black/(White)  
 062 Anthracite/Photo Blue/(White)  
 064 Anthracite/Green Strike/(White)  
 068 Anthracite/Bright Crimson/(White)

BV6938

RRP € 25

Women's: XS S M L XL

[www.niketeamfootball.com](http://www.niketeamfootball.com)



## KNIT PANT



### STRETCHY, SWEAT-WICKING COMFORT.

- Dri-FIT technology helps you stay dry, comfortable and focused.
- Flexible fabric stretches with you as you move so you're quickest to every ball.
- Zippered hems let you change easily over boots or shoes.
- Standard fit for a relaxed, easy feel.
- Zippered side pockets.
- 100% recycled polyester.



- 010 Anthracite/Black/(White)  
 060 Anthracite/Photo Blue/(White)  
 062 Anthracite/Green Strike/(White)  
 067 Anthracite/Bright Crimson/(White)

BV6934

RRP € 45

Women's: XS S M L XL

Life-cycle: 01 January 2020 - 31 December 2021



# ACADEMY 19









## TRAINING TOP



### AERATE TO ELEVATE.

- Dri-FIT technology helps you stay dry, comfortable and focused.
- Stretchy fabric has a subtle ribbed texture.
- Raglan sleeves eliminate the shoulder seam.
- Back of the neck is taped for comfort.
- Outline Swoosh design trademark is embroidered.
- 100% recycled polyester.

*Mesh back and side panels  
add breathability*



Backview

060

404

671

702

060 Anthracite/White/(White)

404 Marina/White/(White)

671 Bright Crimson/White/(White)

702 Volt/White/(White)

**AJ9088**

Men's: S M L XL 2XL

**RRP € 20**

**AJ9261**

Youth: XS S M L XL

**RRP € 15**

## POLO



### CLASSIC FIT. COMFORTABLE PERFORMANCE.

- Dri-FIT technology helps you stay dry, comfortable and focused.
- Mesh side stripes add breathability.
- Collar with hidden placket provides a clean look.
- Seams on the neck are taped for a smooth feel.
- Raglan sleeves eliminate the shoulder seam.
- Outline Swoosh design trademark is embroidered.
- 100% recycled polyester.



Backview

060

404

671

702

060 Anthracite/Anthracite/White/(White)

404 Marina/Marina/White/(White)

671 Bright Crimson/Bright Crimson/White/(White)

702 Volt/Volt/White/(White)

**BQ1496**

Men's: S M L XL 2XL

**RRP € 35**

**BQ1500**

Youth: XS S M L XL

**RRP € 30**



## DRILL TOP



### WARMTH WHERE YOU WANT IT.

- Dri-FIT technology helps you stay dry, comfortable and focused.
- Brushed body fabric provides a warm, comfortable feel.
- Stretchy raglan sleeves move easily with you.
- Invisible thumb loops remain hidden when not in use.
- Mesh side stripes add breathability.
- 1/4-length zipper lets you dial in your ventilation.
- Outline Swoosh design trademark is embroidered.
- 100% polyester.



**AJ9094**

Men's: S M L XL 2XL

**RRP € 40**

**AJ9273**

Youth: XS S M L XL

**RRP € 35**

## KNIT TRACK JACKET



### ESSENTIAL COMFORT. ICONIC STYLE.

- Dri-FIT technology helps you stay dry, comfortable and focused.
- Ribbed cuffs, collar and hem lock in warmth.
- Full front zipper provides easy on-and-off.
- Zippered side pockets store your essentials.
- Outline Swoosh design trademark is embroidered.
- 100% polyester.



**060** Anthracite/White/(White)

**404** Marina/White/(White)

**671** Bright Crimson/White/(White)

**702** Volt/White/(White)

**AJ9180**

Men's: S M L XL 2XL

**RRP € 40**

**AJ9289**

Youth: XS S M L XL

**RRP € 35**



Side pockets  
store your  
essentials



## KNIT SHORT



### BREATHABLE AND BOLD.

- Nike Breathe fabric helps you stay dry and cool.
- Mesh side stripes add ventilation.
- Elastic waistband has a low-profile drawcord.
- 100% polyester.

**BQ5810**

Men's: S M L XL 2XL

RRP € 25

**BQ5812**

Youth: XS S M L XL

RRP € 20



## KNIT PANT



### FIT FOR SPEED.

- Dri-FIT technology helps you stay dry, comfortable and focused.
- Stretchy fabric provides a close fit.
- Hem zippers make for quick and easy changing.
- Mesh side stripes add breathability.
- Zippered side pockets store your essentials.
- Elastic waistband has a low-profile drawcord.
- 100% recycled polyester.

**AJ9181**

Men's: S M L XL 2XL

RRP € 40

**AJ9291**

Youth: XS S M L XL

RRP € 35



## WOVEN PANT



### TECHNICAL COVERAGE.

- Dri-FIT technology helps you stay dry and comfortable.
- Zippered pockets provide secure storage.
- Elastic waistband with drawcord provides a personalized fit.
- 100% polyester.

**BV5836**

Men's: S M L XL 2XL

RRP € 40

**BV5840**

Youth: XS S M L XL

RRP € 35

060 Anthracite/White/(White)

451 Obsidian/White/(White)



# WOVEN TRACK JACKET



## SLIM CUT, FAST FEEL.

- Dri-FIT technology helps you stay dry, comfortable and focused.
- Elastic cuffs help hold sleeves in place.
- Full front zipper provides easy on-and-off.
- Side pockets provide a place to warm your hands.
- Swoosh design trademarks are embroidered.
- 100% polyester.

[www.niketeamfootball.com](http://www.niketeamfootball.com)



Backview

060

404



671

702

- 060** Anthracite/Black/White/(White)  
**404** Marina/Obsidian/White/(White)  
**671** Bright Crimson/White/(White)  
**702** Volt/Black/White/(White)

**AJ9129**

Men's: S M L XL 2XL

**RRP € 40**

**AJ9288**

Youth: XS S M L XL

**RRP € 35**



# ACADEMY 18









Mesh back  
enhances ventilation



## TRAINING TOP

### COOL COMFORT.

- Nike Dry fabric helps you stay dry and comfortable.
- Raglan sleeves allow natural range of motion.
- Back neck tape for zero distractions.
- 100% polyester.

893693

Men's: S M L XL 2XL

RRP € 20

893750

Youth: XS S M L XL

RRP € 15



## DRILL TOP

### ADAPTABLE COVERAGE.

- Nike Dry fabric helps you stay dry and comfortable.
- Raglan sleeves allow for natural range of motion.
- 1/4-zip design with mock neck for custom ventilation.
- Shaped, droptail hem provides extra coverage.
- Cut and sew shoulder stripes for a football fast look.
- 100% polyester.

893624

Men's: S M L XL 2XL

RRP € 40

893744

Youth: XS S M L XL

RRP € 35



## KNIT TRACK JACKET

### SLIM CUT, FAST FEEL.

- Nike Dry fabric wicks sweat to help keep you dry and comfortable.
- Slim, tapered cut provides a streamlined look and feel.
- Zippered side pockets provide convenient small-item storage.
- Stand-up collar with mesh lining provides comfortable coverage.
- Full-front zipper on the jacket offers easy on and off.
- Ribbed cuffs help hold the jacket in place during movement.
- 100% polyester.

893701

Men's: S M L XL 2XL

RRP € 40

893751

Youth: XS S M L XL

RRP € 35



## POLO

### CLASSIC FIT, COMFORTABLE PERFORMANCE.

- Nike Dry fabric wicks sweat for dry comfort.
- Mesh side stripes provide breathability.
- Hidden 3-button placket offers custom ventilation.
- Set-in sleeves provide a comfortable fit.
- Back neck tape provides a soft feel.
- Side vents allow for optimal range of motion.
- 100% polyester.

899984

Men's: S M L XL 2XL

RRP € 35

899991

Youth: XS S M L XL

RRP € 30





*Mesh side stripes  
provide breathability*

- |   |   |
|---|---|
| <b>010</b> Black/Anthracite/(White)       | <b>463</b> Royal Blue/Obsidian/(White)    |
| <b>100</b> White/Black/(Black)            | <b>657</b> University Red/Gym Red/(White) |
| <b>361</b> Green Spark/Pine Green/(White) | <b>719</b> Tour Yellow/Anthracite/(Black) |
| <b>451</b> Obsidian/Royal Blue/(White)    |   |



## WOVEN TRACK SUIT



### LIGHTWEIGHT COVERAGE, SWEAT-WICKING COMFORT.

- Nike Dry fabric helps you stay dry and comfortable.
- Raglan sleeves allow natural range of motion.
- Elasticated cuffs help hold the jacket in place.
- Zippered pockets in jacket and pants for secure storage.
- Jacket has shaped droptail hem for extra coverage.
- Pants have zippered leg openings for easy on and off.
- Elastic waistband with drawcord for an adjustable fit.
- 100% polyester.

100



Backview

010

100

361



451

463

657

719

- 010 Black/Black/Anthracite/(White)  
 100 White/Black/Black/(Black)  
 361 Green Spark/Black/Pine Green/(White)  
 451 Obsidian/Obsidian/Royal Blue/(White)  
 463 Royal Blue/Obsidian/Obsidian/(White)  
 657 University Red/Black/Gym Red/(White)  
 719 Tour Yellow/Black/Anthracite/(Black)

893709

Men's: S M L XL 2XL

RRP € 80

893805

Youth: XS S M L XL

RRP € 70



## HOODIE



### SOFT SWEAT-WICKING WARMTH.

- Nike Dry fabric moves sweat away from your skin.
- Performance fit with hood is streamlined for slim, modern football style.
- Brushed interior provides a soft warm feel.
- Raglan sleeves eliminate the shoulder seam to allow a natural range of motion.
- Iconic Nike Football stripes accent the sleeves.
- 100% polyester.



- 010 Black/Anthracite/(White)  
 100 White/Black/(Black)  
 361 Green Spark/Pine Green/(White)  
 451 Obsidian/Royal Blue/(White)  
 463 Royal Blue/Obsidian/(White)  
 657 University Red/Gym Red/(White)  
 719 Tour Yellow/Anthracite/(Black)

**AH9608**

Men's: S M L XL 2XL **RRP € 45**

**AJ0109**

Youth: XS S M L XL **RRP € 40**

## RAIN JACKET



### CUSTOM COVERAGE.

- Structured hood packs away when not needed.
- Dropped back hem with adjustable drawcords provides extended coverage.
- Hook-and-loop closures on the sleeves can be used to adjust cuff size.
- Zippered hand pockets provide secure storage.
- Full-front zipper for easy on and off.
- 100% polyester.



- 010 Black/Black/(White)  
 451 Obsidian/Obsidian/(White)

**893796**

Men's: S M L XL 2XL **RRP € 55**

**893819**

Youth: XS S M L XL **RRP € 45**

*Ripstop fabric repels light rain and wind*



## WINTER JACKET



### WARMTH WITH STORAGE.

- Nike Dry fabric helps you stay dry and comfortable.
- Zippered hand pockets and chest pocket provide secure storage.
- Dropped back hem with adjustable drawcords provides extended coverage.
- Structured hood with brim provides coverage.
- Hook-and-loop closures on the sleeves can be used to adjust cuff size.
- Full-front zipper for easy on and off.
- 100% polyester.



893798

Men's: S M L XL 2XL

RRP € 120

893827

Youth: XS S M L XL

RRP € 110

010 Black/Black/(White)

451 Obsidian/Obsidian/(White)

## SHIELD DRILL TOP



### WET WEATHER SPEED.

- Fabric resists rain and wind.
- Performance fit and raglan sleeves allow a natural range of motion.
- Stand-up collar enhances coverage.
- Swoosh design trademark is heat transferred on the right chest.
- 100% polyester.

*1/4-length zipper  
allows for custom  
coverage*



893800

Men's: S M L XL 2XL

RRP € 45

893831

Youth: XS S M L XL

RRP € 35

010 Black/Black/(White)

451 Obsidian/Obsidian/(White)





Backview

010

451

## TECH PANT

### SWEAT-WICKING COVERAGE.

- Nike Dry fabric helps you stay dry and comfortable.
- Slim cut with a tapered leg reduces bulk.
- Zippered side pockets provide secure storage.
- Elastic waistband with drawcord for an adjustable fit.
- 100% polyester.

893652

Men's: S M L XL 2XL

RRP € 40

893746

Youth: XS S M L XL

RRP € 35



*Zipper at the ankles  
allow for easy  
on and off*



Backview

010

451

## 3/4 TECH PANT

### FIT FOR SPEED.

- Nike Dry fabric wicks away sweat.
- Zippered side pockets provide convenient storage.
- Tapered 3/4-length fit ends just below your knees.
- Elastic waistband with drawcord provides a custom fit.
- 100% polyester.

893793

Men's: S M L XL 2XL

RRP € 30

893808

Youth: XS S M L XL

RRP € 25



Backview

010

451

## KNIT SHORT

### LEAN MOBILITY. MAXIMUM AGILITY.

- Nike Dry fabric helps you stay dry and comfortable.
- Elastic waistband with drawcord for an adjustable fit.
- Slim fit provides optimal performance.
- Inseam is designed to hit just above the knee.
- 100% polyester.

893691

Men's: S M L XL 2XL

RRP € 20

893748

Youth: XS S M L XL

RRP € 15



Backview

010

451

## WOVEN SHORT

### PERFORMANCE FABRIC WITH POCKETS.

- Nike Dry fabric wicks sweat to keep you dry and comfortable.
- Drawcord provides a low-profile custom fit.
- Waistband is lined with mesh.
- 100% polyester.

893787

Men's: S M L XL 2XL

RRP € 25



010 Black/Black/(White)  
451 Obsidian/Obsidian/(White)



# WOMEN'S ACADEMY 18









## TRAINING TOP



### LIGHTWEIGHT COVERAGE, SWEAT-WICKING COMFORT.

- Nike Dry fabric helps you stay dry and comfortable.
- Raglan sleeves allow natural range of motion.
- Back neck tape for zero distractions.
- 100% polyester.

*Mesh back enhances ventilation*



Backview

010

100

361



451

463

657

719

- 010 Black/Anthracite/(White)
- 100 White/Black/(Black)
- 361 Green Spark/Pine Green/(White)
- 451 Obsidian/Royal Blue/(White)
- 463 Royal Blue/Obsidian/(White)
- 657 University Red/Gym Red/(White)
- 719 Tour Yellow/Anthracite/(Black)

893741

Women's: XS S M L XL

RRP € 20



## POLO



### CLASSIC FIT, COMFORTABLE PERFORMANCE.

- Nike Dry fabric wicks sweat for dry comfort.
- Mesh side stripes provide breathability.
- Set-in sleeves provide a comfortable fit.
- Back neck tape provides a soft feel.
- Side vents allow for optimal range of motion.
- 100% polyester.

*Hidden 3-button placket  
offers custom ventilation*



- 010 Black/Anthracite/(White)
- 100 White/Black/(Black)
- 361 Green Spark/Pine Green/(White)
- 451 Obsidian/Royal Blue/(White)
- 463 Royal Blue/Obsidian/(White)
- 657 University Red/Gym Red/(White)
- 719 Tour Yellow/Anthracite/(Black)

899986

Women's: XS S M L XL

RRP € 35



## DRILL TOP



### ADAPTABLE COVERAGE.

- Nike Dry fabric helps you stay dry and comfortable.
- Raglan sleeves allow natural range of motion.
- 1/4-zip design with mock neck for custom ventilation.
- Shaped droptail hem provides extra coverage.
- Cut and sew mesh shoulder stripes for a football fast look.
- 100% polyester.



- 010 Black/Anthracite/(White)  
 100 White/Black/(Black)  
 361 Green Spark/Pine Green/(White)  
 451 Obsidian/Royal Blue/(White)  
 463 Royal Blue/Obsidian/(White)  
 657 University Red/Gym Red/(White)  
 719 Tour Yellow/Anthracite/(Black)

893710

Women's: XS S M L XL

RRP € 40



## KNIT TRACK JACKET



### SLIM CUT. FAST FEEL.

- Nike Dry fabric wicks sweat to help keep you dry and comfortable.
- Slim, tapered cut provides a streamlined look and feel.
- Zippered side pockets provide convenient small-item storage.
- Stand-up collar with mesh lining provides comfortable coverage.
- Full-front zipper on the jacket offers easy on and off.
- Ribbed cuffs help hold the jacket in place during movement.
- 100% polyester.



Backview

010

100

361



451

463

657

719

- 010 Black/Anthracite/(White)
- 100 White/Black/(Black)
- 361 Green Spark/Pine Green/(White)
- 451 Obsidian/Royal Blue/(White)
- 463 Royal Blue/Obsidian/(White)
- 657 University Red/Gym Red/(White)
- 719 Tour Yellow/Anthracite/(Black)

893767

Women's: XS S M L XL

RRP € 40



## TECH PANT



### SWEAT-WICKING COVERAGE.

- Nike Dry fabric helps you stay dry and comfortable.
- Slim cut with a tapered leg reduces bulk.
- Zippers at the ankles allow for easy on and off.
- Elastic waistband with drawcord for an adjustable fit.
- Cut and sew side stripes for a football fast look.
- 100% polyester.



Backview

010

451

*Zippered side pockets provide secure storage*

010 Black/Black/(White)

451 Obsidian/Obsidian/(White)

893721

Women's: XS S M L XL

RRP € 40

## TECH SHORT

### SLIM FIT. OPTIMAL PERFORMANCE.

- Nike Dry fabric helps you stay dry and comfortable.
- Elastic waistband with drawcord for an adjustable fit.
- Iconic side mesh stripe for a football fast look.
- 100% polyester.



Backview

010

451

*Slim fit for optimal performance*

010 Black/Black/(White)

451 Obsidian/Obsidian/(White)

893723

Women's: XS S M L XL

RRP € 20







NEW

# PARK 20











## TRAINING TOP



### SWEAT-WICKING COMFORT.

- Dri-FIT technology helps you stay dry, comfortable and focused.
- Slim fit for a tailored feel.
- Shoulder piping inspires a classic football look.
- 100% recycled polyester.

[www.niketeamfootball.com](http://www.niketeamfootball.com)



Backview

010

100

302

410 / 451

463

657

719

010 Black/White/(White)

100 White/Black/(Black)

302 Pine Green/White/(White)

410 Obsidian/White/(White) \*

451 Obsidian/White/(White) \*\*

463 Royal Blue/White/(White)

657 University Red/White/(White)

719 Tour Yellow/Black/(Black)

\* Men's only

\*\* Youth only

**BV6883** Short Sleeve

Men's: S M L XL 2XL

**RRP € 17**

**BV6905** Short Sleeve

Youth: XS S M L XL

**RRP € 14**



## POLO



### TRAIN IN COMFORT.

- Dri-FIT technology helps keep you dry and comfortable.
- Standard fit for a relaxed, easy feel.
- Fold-over collar with a two-button placket delivers timeless style.
- Shoulder piping inspires a classic football look.
- 100% recycled polyester.



Backview

010

100

302

410

463

657

719

010 Black/White/(White)

100 White/Black/(Black)

302 Pine Green/White/(White)

410 Obsidian/White/(White)

463 Royal Blue/White/(White)

657 University Red/White/(White)

719 Tour Yellow/Black/(Black)

**BV6879**

Men's: S M L XL 2XL

**RRP € 25**

**BV6903**

Youth: XS S M L XL

**RRP € 20**





## CREW TOP



### SOFT, SWEAT-WICKING COVERAGE.

- Dri-FIT technology helps you stay dry, comfortable and focused.
- Standard fit for a relaxed, easy feel.
- Shoulder piping inspires a classic football look.
- 100% polyester.



Backview

010

100

302

410

463

657

719

010 Black/White/(White)

100 White/Black/(Black)

302 Pine Green/White/(White)

410 Obsidian/White/(White)

463 Royal Blue/White/(White)

657 University Red/White/(White)

719 Tour Yellow/Black/(Black)

**BV6875**

Men's: S M L XL 2XL

RRP € 35

**BV6901**

Youth: XS S M L XL

RRP € 30



## RAIN JACKET



### TRAIN THROUGH RAIN.

- Dri-FIT technology and water-repellant fabric help you stay dry in light rain.
- Side pockets with mesh lining help keep belongings safe and dry.
- Shoulder piping inspires a classic football look.
- 100% recycled polyester.



Backview

010

060

302

410

463

657

719

010 Black/White/(White)

060 Anthracite/Anthracite/(White)

302 Pine Green/White/(White)

410 Obsidian/White/(White)

463 Royal Blue/White/(White)

657 University Red/White/(White)

719 Tour Yellow/Black/(Black)

**BV6881**

Men's: S M L XL 2XL

RRP € 40

**BV6904**

Youth: XS S M L XL

RRP € 35





## KNIT TRACK JACKET



### SWEAT-WICKING COMFORT.

- Dri-FIT technology helps you stay dry and comfortable.
- Knit fabric feels soft and comfortable.
- Standard fit for a relaxed, easy feel.
- Side pockets with mesh lining help keep your belongings safe and dry.
- 100% polyester.



010 Black/White/(White)  
100 White/Black/(Black)  
302 Pine Green/White/(White)  
410 Obsidian/White/(White)

463 Royal Blue/White/(White)  
657 University Red/White/(White)  
719 Tour Yellow/Black/(Black)

#### BV6885

Men's: S M L XL 2XL

RRP € 35

#### BV6906

Youth: XS S M L XL

RRP € 30



## KNIT PANT



### SWEAT-WICKING COMFORT.

- Dri-FIT technology helps keep you dry and comfortable
- Panels on the calves make it easy to change with boots.
- Side pockets hold your belongings.
- Standard fit for a relaxed, easy feel.
- Elastic waistband and drawcord.
- 100% polyester.



010 Black/Black/(White)  
410 Obsidian/Obsidian/(White)

#### BV6877

Men's: S M L XL 2XL

RRP € 30

#### BV6902

Youth: XS S M L XL

RRP € 25







## TRAINING BIB

### DISTRACTION FREE TRAINING.

- Mesh fabric provides lightweight breathability.
- Generous cut allows for quick side changes.
- Performance fit allows for natural range of motion.
- Swoosh design trademark is printed on front.
- 100% polyester.



- 100 White/(Black)  
313 Action Green/(Black)  
406 Photo Blue/ (Black)  
616 Vivid Pink/(Black)  
702 Volt/(Black)

910936

Unisex: XXS S L

RRP € 8

Life-cycle: 01 January 2020 - 31 December 2020

## CREW SOCK



### ICONIC DESIGN. MADE FOR TRAINING.

- Dri-FIT technology helps keep you dry and comfortable.
- Dynamic arch compression provides a supportive fit.
- Flat toe seam helps reduce friction.
- 67% nylon, 23% cotton, 6% polyester, 4% spandex.



- 010 Black/Anthracite/(White)  
100 White/Jetstream/(Black)  
451 Obsidian/Deep Royal/(White)  
463 Royal Blue/Bright Blue/(White)  
657 University Red/Team Red/(White)

SX6835 Unisex

RRP € 10

XS: Eur 30-34 | S: Eur 34-38 | M: Eur 38-42 | L: Eur 42-46 | XL: Eur 46-50  
XS: UK 12-2 | S: UK 2-5 | M: UK 5.5-7.5 | L: UK 8-11 | XL: UK 11-14.5

Life-cycle: 01 April 2017 - 31 December 2020

This product must be ordered in multiples of 6 pairs.



## TEAM UNISEX BEANIE



### HEAT INSULATION WITH ATHLETIC STYLE.

- Dri-FIT technology keeps you dry and comfortable.
- Elastic body allows for a personalised fit.
- Cotton brim guarantees warmth during play.
- 62% cotton, 38% polyester.



013 Black/Black/(White)

AV9751

RRP € 20

Unisex: One size fits all

Life-cycle: 01 October 2018 - 30 September 2020

## TEAM FALL JACKET

### WARM PROTECTION TO TRAIN.

- Fabric provides breathable weather resistance.
- Fleece lining provides comfortable warmth.
- Adjustable hood with toggles gives adaptable coverage.
- Side zippered pockets offer secure storage.
- Elastic hem drawcord lets you adjust the fit.
- 100% polyester.

  
[www.niketeamfootball.com](http://www.niketeamfootball.com)



010 Black/Black/(White)

451 Obsidian/Obsidian/(White)

645550

Men's: S M L XL 2XL

RRP € 100

645905

Youth: XS S M L XL

RRP € 90

Life-cycle: 01 January 2015 - 31 December 2020



# LIFESTYLE









## TEAM CLUB 19 TEE

### EVERY DAY. EVERY TEAM.

- Cotton and polyester blend has a soft feel.
- Shoulder seams are taped for a smooth feel.
- Standard fit follows the shape of your body.
- Set-in sleeves and ribbed neck provide a classic look.
- Swoosh design trademark is embroidered on the right chest.
- 65% cotton, 35% polyester.



- 010 Black/Black/Black/(White)  
 071 Charcoal Heather/Charcoal Heather/Charcoal Heather/(White)  
 100 White/White/White/(Black)  
 451 Obsidian/Obsidian/Obsidian/(White)  
 463 Royal Blue/Royal Blue/Royal Blue/(White)  
 657 University Red/University Red/University Red/(White)

#### AJ1504

Men's: S M L XL 2XL

RRP € 24,95

#### AJ1548

Youth: XS S M L XL

RRP € 19,95

## TEAM CLUB 19 POLO

### CLEAN-FINISHED CLASSIC.

- Cotton fabric is double knit for a soft, textured feel.
- Collar with hidden placket provides a clean look.
- Dropped back hem adds versatile coverage.
- Reinforced shoulder seams provide durability.
- Standard fit follows the shape of your body with added room.
- Swoosh design trademark is embroidered on the right chest.
- 100% cotton.



- 010 Black/(White)  
 071 Charcoal Heather/(White)  
 100 White/(Black)  
 451 Obsidian/(White)  
 463 Royal Blue/(White)  
 657 University Red/(White)

#### AJ1502

Men's: S M L XL 2XL

RRP € 30

#### AJ1546

Youth: XS S M L XL

RRP € 25



## TEAM CLUB 19 CREW

### SWEAT-WICKING COMFORT.

- French terry fabric provides soft, warm comfort.
- Ribbed neck, cuffs and hem offer a snug fit.
- Crew neck collar provides a versatile fit.
- 80% cotton, 20% polyester.



Backview

010

063



071

451

657

- 010 Black/(White)  
 063 Dark Grey Heather/(White)  
 071 Charcoal Heather/(White)  
 451 Obsidian/(White)  
 657 University Red/(White)

#### AJ1466

Men's: S M L XL 2XL **RRP € 50**

#### AJ1545

Youth: XS S M L XL **RRP € 40**



## TEAM CLUB 19 HOODIE

### PURE COMFORT. CLASSIC DESIGN.

- Metal eyelets offer style and function.
- Ribbed neck, cuffs and hem offer a snug fit.
- Hood and kangaroo pocket offer warm coverage.
- External drawcord absent on youth style.
- 80% cotton, 20% polyester.



- 010 Black/Black/White/(White)  
 071 Charcoal Heather/Anthracite/White/(White)  
 451 Obsidian/Obsidian/White/(White)  
 463 Royal Blue/Royal Blue/White/(White)  
 657 University Red/University Red/White/(White)

**AR3239**

Men's: S M L XL 2XL

**RRP € 55**

**AJ1544**

Youth: XS S M L XL

**RRP € 45**

## TEAM CLUB 19 FULL-ZIP HOODIE

### SOFT FEEL. IMPROVED COMFORT.

- Full-zip design helps you vary your coverage.
- Subtle colourways for a clean look.
- External drawcord absent on youth style.
- 80% cotton, 20% polyester.

*Metal eyelets offer style and function*



- 010 Black/Black/White/(White)  
 063 Dark Grey Heather/Dark Steel Grey/Black/(Black)  
 071 Charcoal Heather/Anthracite/White/(White)  
 451 Obsidian/Obsidian/White/(White)  
 657 University Red/University Red/White/(White)

**AJ1313**

Men's: S M L XL 2XL

**RRP € 60**

**AJ1458**

Youth: XS S M L XL

**RRP € 50**



## TEAM CLUB 19 SHORT

### DEVELOPED FOR STYLE.

- French terry fabric provides soft, warm comfort.
- External drawcord provides a customised fit.
- Fitted design for a more stylish look.
- 80% cotton, 20% polyester.



- 010 Black/Black/White/(White)  
 063 Dark Grey Heather/Dark Steel Grey/Black/(Black)  
 071 Charcoal Heather/Anthracite/White/(White)  
 451 Obsidian/Obsidian/White/(White)

#### AQ3136

Men's: S M L XL 2XL RRP € 35

#### AQ3142

Youth: XS S M L XL RRP € 30

## TEAM CLUB 19 PANT

### ALL DAY COMFORT.

- Brushback fleece provides ultimate warmth.
- Elastic waist and external drawcord offers an adjustable fit.
- 80% cotton, 20% polyester.



- 010 Black/White/(White)  
 063 Dark Grey Heather/Black/(Black)  
 071 Charcoal Heather/White/(White)  
 451 Obsidian/White/(White)

#### AJ1468

Men's: S M L XL 2XL RRP € 45

#### AJ1549

Youth: XS S M L XL RRP € 40



# EQUIPMENT









# BALLS



100

## NIKE MERLIN II

### BIGGER SWEET SPOT. UNRIVALED FLIGHT CONTROL.

- 4-panel construction enlarges the striking surface for a bigger sweet spot.
- 3-D ink creates variations in texture for targeted control in wet and dry conditions.
- Nike Aerow Trac grooves allow consistency in ball spin.
- Latex bladder maintains air pressure more consistently than traditional rubber bladders.
- 37% synthetic leather, 33% rubber, 20% polyester, 10% cotton.

100 White/Obsidian/Blue Fury/White

SC3635

Size: 5

RRP € 130

Life-cycle: 01 July 2019- 30 June 2020



CN5332

Size: 5

RRP € 134,99

Life-cycle: 01 July 2020 - 30 June 2021



100

## NIKE MAGIC III

### EASY TRACKING. TRUE FLIGHT.

- Nike Aerow Trac grooves provide accurate ball flight.
- Traditional multi-paneled design is fuse welded for excellent response.
- High-contrast graphic for better visual tracking.
- 40% rubber, 40% synthetic leather, 15% polyester, 5% cotton.

100 White/Obsidian/Blue Hero/White

SC3622

Size: 5

RRP € 60

Life-cycle: 01 July 2019- 31 December 2020



CN5341

Size: 5

RRP € 64

Life-cycle 01 July 2020 - 30 June 2021







100

## NIKE TEAM MAGIA II

### ENHANCED DURABILITY. CONSISTENT PERFORMANCE.

- From 12-panels to 4 panels for increased sweet spot and better striking.
- Aerow Trac grooves provide a truer flight for more consistent shots.
- Micro-texture casing for better grip.
- FIFA badged.
- 40% rubber, 40% synthetic leather, 15% polyester, 5% cotton.

100 White/Black/Volt/(Black)

SC3536

Size: 5

RRP € 60

Life-cycle: 01 January 2019- 31 December 2020



100

## NIKE STRIKE PRO TEAM

### DECISIVE ACCURACY. PERFECTLY CONTROLLED TOUCH.

- 12-panel design for true and accurate ball flight.
- Textured casing offers improved touch and feel.
- Reinforced rubber bladder enhances air and shape retention.
- Nike Aerow Trac grooves help stabilize the ball flight.
- High-contrast graphics for easy ball tracking.
- 60% rubber, 15% polyurethane, 13% polyester, 12% EVA.

100 White/Black/Volt/(Black)

101 White/Black/Total Orange/(Total Orange)

SC3936

Size: 4

RRP € 35

SC3539

Size: 5

RRP € 35

Life-cycle: 01 January 2019 - 31 December 2020



101



100

101



102

710



100 290g



100 350g

## NIKE STRIKE TEAM

### CRAFTED TO PERFECTION.

- New thicker casing and stronger threads provide increased durability.
- Aerow Trac grooves provide a truer flight for more consistent shots.
- Micro-texture casing for better grip.
- 60% rubber, 15% polyurethane, 13% polyester, 12% EVA.

100 White/Black/Fuchsia Blast/(Fuchsia Blast)

101 White/Black/Total Orange/(Total Orange)

102 White/Black/Volt/(Volt)

710 High Vis Yellow/Crimson/Purple/(Crimson)

SC3535

Size: 3, 4, 5

RRP € 25

Life-cycle: 01 January 2019 - 31 December 2020



## NIKE STRIKE TEAM LIGHTWEIGHT

### EVERYDAY PLAY.

- Textured casing offers great touch and feel.
- Rubber bladder helps maintain air pressure and shape.
- High-contrast graphics are easy to see.
- 60% rubber, 15% polyurethane, 13% polyester, 12% EVA.

100 White/Black/Cyan 290g

100 White/Black/Bright Crimson 350g

SC3989 (290g)

Size: 4, 5

RRP € 25

SC3991 (350g)

Size: 5

RRP € 25

Life-cycle: 01 January 2020 - 31 December 2020













100

398



## NIKE PITCH TEAM

### EVERYDAY PLAY.

- Smooth, durable casing has a consistent feel.
- Rubber bladder helps maintain air pressure and shape.
- High-contrast graphics make it easy to track the ball.
- 60% rubber, 15% polyurethane, 13% polyester, 12% EVA.

100 White/Black

398 Green Strike/Black

610 Bright Crimson/White

710 Yellow/Blue

803 Total Orange/Blue



610

710

803

SC3992

Size: 3, 4, 5

RRP € 20

Life-cycle: 01 January 2020 - 31 December 2020



101



## NIKE FUTSAL

### DURABLE AND EASY TO READ.

- High-contrast graphics make it easy to read the ball.
- The durable design is textured for ball control.
- Hand-sewn construction is durable and abrasion resistant.
- Textured casing provides great touch and feel.
- Official Futsal size and weight.
- 60% rubber, 15% polyurethane, 13% polyester, 12% EVA.

PRO

101 White/Racer Blue/Black

MAESTRO

101 White/Bright Crimson/Racer Blue



101

SC3971 SIZE: PRO

RRP € 35

SC3974 SIZE: PRO, YOUTH

RRP € 20

Life-cycle: 01 January 2020 - 31 December 2020

# BAGS



## NIKE CLUB TEAM DUFFEL

### CONVENIENT STORAGE TO AND FROM THE FIELD.

- Main compartment offers spacious storage.
- Interior pocket provides a secure spot for small items.
- Separate wet/dry compartment helps keep gear clean and organized.
- Carry handles attach together for an alternate carrying option.
- 100% polyester.

010 Black/Black/(White)

410 Midnight Navy/Black/(White)

657 University Red/Black/(White)

CV7828 large

Size: 50L x 32W x 41H cm / 53L

RRP € 35

CV7829 medium

Size: 48L x 31W x 37H cm / 48L

RRP € 30

CV7830 small

Size: 44L x 29W x 36H cm / 42L

RRP € 25



010

410

657





## NIKE CLUB TEAM HARDCASE

### TOUGH STORAGE FROM PITCH TO PAVEMENT.

- Main body compartment offers spacious storage.
- Hard bottom helps keep items protected.
- Versatile hand and shoulder straps help you easily carry your gear.
- Zippered wet/dry compartment at the bottom helps keep things clean and organized.
- 100% polyester.

010 Black/Black/(White)  
410 Midnight Navy/Black/(White)  
657 University Red/Black/(White)

#### CV7826 large

Size: 50L x 33W x 41H cm / 52L

RRP € 45

#### CV7827 medium

Size: 48L x 31W x 40H cm / 45L

RRP € 40





## NIKE CLUB TEAM BACKPACK

### PITCH-READY STORAGE.

- Front pocket provides ball storage.
- Laser-perforated wet/dry compartment helps keep gear clean and organized.
- Mesh pocket on the side for water bottle storage.
- Large, dual-zippered main compartment provides secure storage for your gear.
- Curved shoulder straps and back panel are padded for comfortable carrying.
- Back pocket features a felt interior for phone or key storage.
- Space at the front offers room for a team crest.
- 100% polyester.

010 Black/Black/(White)  
 410 Midnight Navy/Black/(White)  
 657 University Red/Black/(White)

**BA5501**

Size: 48L x 35W x 17D cm / 30L **RRP € 30**

Life-cycle: 01 April 2018 - 31 December 2020

## NIKE YOUTH BACKPACK

### PITCH-READY STORAGE.

- Dual-zippered, main compartment provides secure storage.
- Wet/dry compartment helps keep gear clean and organized.
- Mesh pocket on the side for water bottle storage.
- Padded shoulder straps and back panel for comfortable carrying.
- Felt-lined back pocket offers phone or key storage.
- 100% polyester.

010 Black/Black/(White)

**BA5773**

Size: 45L x 30W x 13D cm / 22L **RRP € 25**

Life-cycle: 01 April 2018 - 31 December 2020

## NIKE CLUB TEAM ROLLER BAG

### DIVIDED COMPARTMENTS FOR CONVENIENCE.

- Adjustable handle and wheels for easier hauling.
- Grab handle on the side gives an alternative carrying option.
- Zippered main compartment provides secure storage.
- 100% polyester.

**BA5199**

Size: 82L x 35W x 38H cm / 120L **RRP € 75**

Life-cycle: 01 January 2015 - 31 December 2021

010 Black/Black/(White)







## NIKE HYPERWARM FIELD PLAYER GLOVES

### BATTLE THROUGH BAD WEATHER.

- Nike Pro HyperWarm features sweat-wicking thermal fabric to help keep your hands warm and dry.
- Silicone zones on fingers and palm enhance ball grip.
- Flexible cuffs stretch for a secure fit.
- 60% polyester, 27% nylon, 8% other, 5% rubber.

**GS0373**

Size: S M L XL

RRP € 25

Life-cycle: 01 October 2018 - 30 September 2020



**CU1589**

Size: S M L XL

Life-cycle: 01 October 2020 - 30 September 2022

013 Black/(White)



## NIKE CLUB TEAM TOILETRY BAG

### SECURE STORAGE FOR ESSENTIALS.

- Zippered closure for secure storage.
- Tarpaulin bottom helps keep items dry.
- Haul loop for convenient carrying.
- 100% polyester.

**BA5198**

Size: 27L x 16W x 16H cm / 6L

RRP € 15

Life-cycle: 01 January 2019 - 31 December 2021

010 Black/Black/(White)



## NIKE CLUB TEAM BALL BAG

### FOR TRAINING OR GAMEDAY.

- Adjustable padded straps for comfortable carrying.
- Drawcord closure provides easy-access storage.
- 84% polyester, 16% nylon.

**BA5200**

Size: 86L x 47W x 47H cm / 164L

RRP € 35

Life-cycle: 01 January 2019 - 31 December 2021

010 Black/Black/(White)

## SIZE CHARTS

### A P P A R E L



#### Men's (metric)

| Size<br>(cm) | Chest   | Waist   | Hip     | Inseam  |       |      |
|--------------|---------|---------|---------|---------|-------|------|
|              |         |         |         | Regular | Short | Long |
| <b>S</b>     | 88-96   | 73-81   | 88-96   | 82-5    | 77-5  | 87-5 |
| <b>M</b>     | 96-104  | 81-89   | 96-104  | 83      | 78    | 88   |
| <b>L</b>     | 104-112 | 89-97   | 104-112 | 83-5    | 78-5  | 88-5 |
| <b>XL</b>    | 112-124 | 97-109  | 112-120 | 84      | 79    | 89   |
| <b>XXL</b>   | 124-136 | 109-121 | 120-128 | 84-5    | 79-5  | 89-5 |
| <b>XXXL</b>  | 136-148 | 121-133 | 128-136 | 85      | 80    | 90   |

#### Women's (metric)

| Size<br>(cm) | Bust    | Waist | Hip     | Inseam  |       |      |
|--------------|---------|-------|---------|---------|-------|------|
|              |         |       |         | Regular | Short | Long |
| <b>XS</b>    | 76-83   | 60-67 | 84-91   | 79-5    | 74-5  | 84-5 |
| <b>S</b>     | 83-90   | 67-74 | 91-98   | 79-5    | 74-5  | 84-5 |
| <b>M</b>     | 90-97   | 74-81 | 98-105  | 80      | 75    | 85   |
| <b>L</b>     | 97-104  | 81-88 | 105-112 | 80      | 75    | 85   |
| <b>XL</b>    | 104-114 | 88-98 | 112-120 | 80.5    | 75.5  | 85.5 |

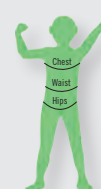


#### Kids' (metric)

| Size<br>(cm) | Chest     | Waist     | Hip       | EMEA Height |
|--------------|-----------|-----------|-----------|-------------|
|              |           |           |           |             |
| <b>XS</b>    | 64.5-66   | 59.5-61.5 | 68.5-71   | 122-128     |
| <b>S</b>     | 66-69     | 61.5-65   | 71-74.5   | 128-137     |
| <b>M</b>     | 69-75     | 65-69     | 74.5-79.5 | 137-147     |
| <b>L</b>     | 75-81.5   | 69-72.5   | 79.5-84.5 | 147-158     |
| <b>XL</b>    | 81.5-88.5 | 72.5-75.5 | 84.5-89.5 | 158-170     |

#### Little Kids' (metric)

| Size<br>(cm) | Numeric<br>Size | Chest | Waist | Hip   | Height  | Age |
|--------------|-----------------|-------|-------|-------|---------|-----|
|              |                 |       |       |       |         |     |
| <b>XS</b>    | 4               | 53-56 | 54-56 | 56-59 | 96-104  | 3-4 |
| <b>S</b>     | 5               | 56-59 | 56-58 | 59-61 | 104-110 | 4-5 |
| <b>M</b>     | 6               | 59-61 | 58-59 | 61-63 | 110-116 | 5-6 |
| <b>L</b>     | 6X/7            | 61-63 | 59-60 | 63-66 | 116-122 | 6-7 |
| <b>XL</b>    | 7X              | 63-66 | 60-61 | 66-70 | 122-128 | 7-8 |



### S O C K S

#### Men's & Women's (unisex)

| Size      | Europe Shoe | UK Shoe | Men's<br>US Shoe | Women's<br>US Shoe | cm    |
|-----------|-------------|---------|------------------|--------------------|-------|
| <b>XS</b> | 30-34       | 12-2    | 13C-3Y           |                    | 19-21 |
| <b>S</b>  | 34-38       | 2-5     | 3Y-5Y            | 4-6                | 21-24 |
| <b>M</b>  | 38-42       | 5.5-7.5 | 6-8              | 6-10               | 24-27 |
| <b>L</b>  | 42-46       | 8-11    | 8-12             | 10-13              | 27-30 |
| <b>XL</b> | 46-50       | 11-14.5 | 12-15            |                    | 30-33 |

### B A L L S

#### Junior - Youth - Adult

| Size<br>(cm)  | 3       | 4       | 5     | Age           |
|---------------|---------|---------|-------|---------------|
| <b>Junior</b> | 58.5-61 |         |       | 8 and younger |
| <b>Youth</b>  |         | 63.5-66 |       | 8-12          |
| <b>Adult</b>  |         |         | 68-70 | 13+           |



# NIKE FIT SYSTEM



DRI-FIT: Pulls away sweat to help keep you dry and comfortable.

DRI-FIT SPHERE: 3-D construction helps keep you dry and reduces cling from sweat.



STORM-FIT 1: Helps keep you dry and comfortable in moderate weather conditions.

5,10 & 20: Helps keep you comfortable and dry in rain, sleet and snow.

The seam-sealed, breathable fabric completely blocks wind and rain penetration at:

STORM-FIT 5: up to 5,000 mm of water pressure

STORM-FIT 10: up to 10,000 mm of water pressure

STORM-FIT 20: up to 20,000 mm of water pressure

---

## WASH INSTRUCTIONS

### CARE INSTRUCTIONS FOR NIKE TEAM SPORTS APPAREL PRODUCT

Care for jerseys promptly. The sooner you pre-treat and launder the stained clothes, the better your results will be. Don't allow mud or stains to set. Do not leave wet or dirty jerseys in football or gym bags, where smells and permanent stains can develop.

#### If a stain is not removed in washing:

1. Do not dry it. Dryer heat will set the stain.
2. Soak the stain in a pre-wash. In the case of severe staining it may be necessary to apply a stain remover directly to the affected area. Then launder again.
3. Do not dry a garment until the stain is removed because dryer heat will set the stain.

Once stain is removed launder as per usual custom.

### CARE DEFINITIONS

Pre-treat heavily soiled spots. Apply undiluted laundry detergent with a bleach alternative.

Pre-soak heavy stains. Soak stained items in a plastic bucket or laundry tub with the warmest water safe for the fabric and a good laundry detergent for one to three hours.

Sensitive stains should be rinsed in cold water, and then washed with a non-chlorine bleach product.

Pre-wash: Used for heavily soiled garments. Run through the pre-wash cycle with the recommended amount of detergent.

When wash cycle is complete, drain the pre-wash solution and launder in the hottest water recommended by the manufacturer.

**Please check the washing instructions on the garment.**

---

## DISCLAIMER

This Nike Team Football catalogue has been created to offer a comprehensive view of products available for sale to teams.

Whilst the information provided in this catalogue has been gathered and assembled with every effort made to ensure the accuracy of the content, Nike does not make any warranty in respect of this information.

Nike reserves the right to change items in the product line or their individual specification at any time.



Copyright © NEON 01/2020 - Distributed by NEON - BENELUX